



# Curriculum Newsletter

## GOLDSBOROUGH SICKLINGHALL Federation

### Willow - April – May 2024



The Christian / Human Values we are exploring this half term are: Humility and Trust  
 Our 'Big Thinking' SMSC Question for this half term is: How did people in the past develop trust? Have any significant people in this period of history demonstrated humility?

#### English

**Our focus is: Letter writing and persuasive leaflets**

This half term we will be looking at writing a formal letter to Carlton Lodge explaining and describing our time on residential and thanking them for our stay. We will be using a range of grammar techniques such as: formality in vocabulary and punctuations for example removing contractions and adding advances punctuation like dashes to extend out sentences. We will also be looking at modal verbs which change the possibilities of something happening and tenses simple, perfect and progressive past tense.



We will then be moving on to writing a persuasive leaflet about Carlton Lodge, advertising the activity centre to potential visitors. We will be looking at a range of persuasive devices such as rhetorical questions and powerful vocabulary.

We will be looking at a range of sentence types and focusing on the following Alan Peat sentences.

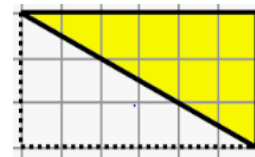
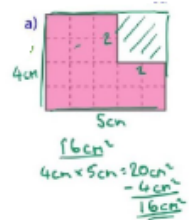
Our Class text for this half term is:

**O. (I.) sentences -Outside. (Inside.) sentences**  
 O. (I.) sentences are made up of 2 related sentences.  
 The first sentence tells the reader the character's outward actions.  
 He smiled and shook the man's hand warmly. (Inside, however, he was more angry than he had ever been.)  
 The second (placed in brackets) shows the characters true INNER feelings.

#### Maths

**Our focus is: Area, perimeter and volume and Statistics**

We will begin this half term by exploring area, perimeter and volume before moving onto statistics. Year 5 will begin by learning how to find the perimeter of rectangles and rectilinear shapes and a range of polygons. They will then learn to estimate area and calculate the area of rectangles.

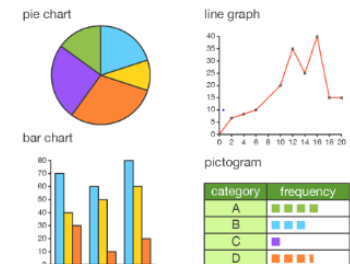


Year 6 will focus on finding the area and perimeter of simple quadrilaterals and progress to calculating missing lengths in rectilinear shapes. They will then explore triangles and finding the perimeter and area of right-angled triangles and parallelograms.

Year 6 will then continue with volume and learning how to calculate the volume of cubes and cuboids.

Following this unit, we will move onto Statistic. During this unit, Year 5 will begin by reading and interpreting line graphs before constructing their own. They will then continue with exploring and reading timetables.

Year 6 will consolidate their knowledge of reading and constructing bar charts and line graphs before exploring pie charts and percentages.



Over the course of this half term, Year 6 will be working on a range of questions and papers which will consolidate their KS2 learning in preparation for their SATS tests.

### How can I help?

Children to Read for a minimum of 15 minutes reading every night (logged by the children and noted in their Planner).

### **Recommended Reads:**

#### **Books linked to our Tudor Topic**

Treason by Berlie Doherty  
The Queen's Fool by Ally Sherrick  
Diver's Daughter by Patrice Lawrence  
My Friend Walter by Michael Morpurgo

#### **General Reading Recommendations:**

Xanthe & the ruby Crown by Jasbinder Bilan  
The Final Year by Matt Goodfellow and Joe Todd-Stanton  
The Railway Children by E Nesbit

### **What are summarising skills?**

Fluency - reading the text quickly and accurately – we are aiming for 90 words per minute of an age-appropriate text.

Year 6 will be focusing on SATs style questions, evidencing their points using direct quotes from the text. This will help them master and feel confident about the 3-mark questions in SATs.

**Spelling:** Learn the list of spellings which are given to the children each half-term. The patterns change every week. The children should also be practicing their Year 5 and 6 statutory words, these can be found in their planners.

### How can I help?

Regular use of Times Table Rock Stars will support children's rapid recall of key facts. Short, regular practise of the KIRFS, in relation to a day to day activity will also support rapid recall. (E.g. scaling the number of eggs when baking)

#### Useful Websites:

[www.topmarks.co.uk](http://www.topmarks.co.uk)  
<https://www.iseemaths.com/lessons56/> (supports pupils reasoning and problem solving)  
<https://www.bbc.co.uk/bitesize/subjects/z826https://nrich.maths.org/13786n39> (supports pupils reasoning and problem solving)  
<https://www.educationquizzes.com/ks2/maths/> (has quizzes for each national curriculum objective for each year group)

### **KIRF Targets –**

#### **Year 5**

- Convert between measures of time
- Tell the time accurately to the nearest minute using an analogue clock
- Draw the time accurately to the nearest minute using an analogue clock
- Calculate durations of time using a number line
- Conversion of 12 hour to 24hr clock
- Column addition and subtraction.

#### **Year 6**

- Fluency of key mathematical facts. Consolidation prior to transition to secondary school.

# Curriculum: Key Skills, Knowledge and Enrichment

## Topic – History

**Our focus is:** Tudor Knaresborough and Mother Shipton



**Skills / Knowledge to be developed:**

In history this half term we will be looking at the Tudors, we will be able to locate this period of time on a timeline using all our History chronological knowledge. We will be looking at the monarchy throughout this period of time and the challenges there were between the Crown and Religion due to Henry VIII.

We will be then linking our Tudor knowledge to understanding and studying Mother Shipton who was around during this time. By the end of the term we will be able to outline her life, what was significant about her, her prophecies, myths and legends.

**Greater Depth Challenge:** will be able to use dates to sequence events from Mother Shipton's life, using time terms, such as 'CE'/'BCE'/'BC /AD' and period labels and terms.

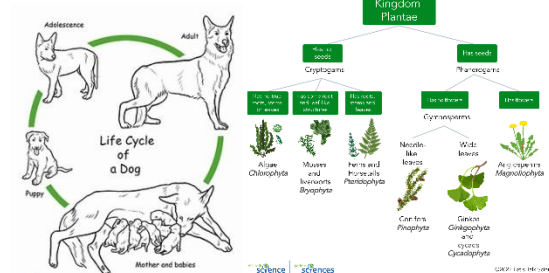
**Applied through:** History Lessons and our trip to Mother Shipton's Cave.

**How can I help?**

Take a walk around Knaresborough Castle. Discuss the history of the castle and what is known about Knaresborough and Old Mother Shipton. When was the Tudor period? How does this link to periods of history they already know?

## Science

**Our focus is:** Living things and their habitats



**Skills / knowledge to be developed:** Our focus this half term is living things and their habitats. The children will be able to describe how living things are classified into broad groups according to common observable characteristics and based on similarities and differences, including micro-organisms, plants and animals. We are also going to give reasons for classifying plants and animals based on specific characteristics.

**Greater Depth Challenges:** Children will be challenged to explain their ideas and understanding on concepts using scientific vocabulary in detail. They will demonstrate scientific skills independently in investigations for example, being able to evaluate whether an experiment was a fair test.

**Applied through:** Discussions, carrying out investigations and conducting research.

**How can I help?**

Discuss with your child what they have learnt and begin to think about how their knowledge can be used to create a double page spread. Research Earth and Space for new ideas

## P.E

**Our focus is:** Athletics



**Skills / knowledge to be developed:** During this half term we will be covering a vast amount of skills linked to athletics. We will start by focusing on our track events such as running, hurdle and sprinting techniques, how to set off and create power through our positioning, arms and legs.

We will then be moving onto fielding events such as long jump and javelin. Learning a range of techniques to help them be successful.

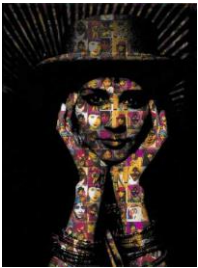




**Greater Depth Challenges:** Children will evaluate and develop their techniques based on how successful their outcomes were. For example, adapting their positioning when throwing a javelin to improve their outcome.

**Applied through:** P.E lessons

**How can I help?**

Please ensure that children have PE kit (including trainers) for the whole week as other indoor and outdoor sessions might take place at alternative times.

## Curriculum: Key Skills, Knowledge and Enrichment

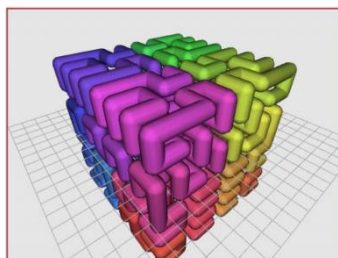
Art	French	PSHE / Wellbeing	R.E.
<p><b>Our focus is:</b> 3D FORM Sculpture</p> <div style="display: flex; justify-content: space-around;">   </div> <p><b>Skills / knowledge to be developed:</b> This half term we will be looking at two different artists: Peter Randall-Page and Chila Kuman Singh Burman. We will be designing and creating a 3D sculpture using clay. We will explore patterns and textures in nature and use this to enhance our final piece, considering the tactile and textural qualities to their work. .</p> <p><b>Greater Depth Challenges:</b> Will consider the need of aesthetic qualities in my work and apply them. <b>Applied through:</b> Art Lessons.</p>	<p><b>Our focus is:</b> Days of the Week and Months.</p> <div style="text-align: center;">  </div> <p><b>Skills / knowledge to be developed:</b> This half term the children will be recapping previous knowledge learnt in French this year: numbers up to 20, colours, fruit and vegetables and how to greet someone and have a simple conversation. We will then be looking at the days of the week and months of the year. We will be able to put them into a sentence for example, “My birthday is in November” – “Mon anniversaire est en Novembre”</p> <p><b>Greater depth challenges:</b> Will be able to apply new vocabulary to existing knowledge to form sentences and simple conversations in French.</p> <p><b>Applied through:</b> French Lessons</p>	<p><b>Our focus is:</b> Money and Work</p> <div style="text-align: center;">  </div> <p><b>Skills / knowledge to be developed:</b> During this term we will be looking at money and work, we will start by identifying jobs that they might like to do in their future and discuss the concept of ambition and achievement. We will discuss how and why someone might choose a certain career and what might influence people’s decisions including pay, working conditions, personal interests, strengths and qualities, family and values.</p> <p><b>Greater Depth Challenges:</b> will understand the importance of diversity and inclusion to promote people’s career opportunities and understanding why there is some stereotyping surrounding work and money.</p> <p><b>Applied through:</b> PSHE lessons and discussions.</p>	<p><b>Our focus is:</b> If God is everywhere, why go to a place of worship?</p> <div style="text-align: center;">  </div> <p><b>Skills / knowledge to be developed:</b> This half term we will be learning about how and why places of worship fulfil special functions in the lives of different believers and we will be commenting thoughtfully on the value and purpose of places of worship in religious communities such as Christianity, Judaism and Hinduism.</p> <p><b>Greater depth challenges:</b> Will be able to connect ideas from my learning about the significance of the place of worship for different faiths groups and how they would be impacted if their place of worship was no longer available. They will also be able to discuss the question – Why are places of worship often targeted during hate crimes? <b>Applied through:</b> RE Lessons.</p>
<p><b>How can I help?</b> Discuss and research sculpture artists and explore different forms of art at home.</p>	<p><b>How can I help?</b> Encourage your children to share what they have been learning in class. Can they teach you the days of the week and the months of the year?</p>	<p><b>How can I help?</b> Talk to your children about different jobs and opportunities. Discuss likes and interests and how this is very important when growing up and having to make discussions like choosing a career.</p>	<p><b>How can I help?</b> Discuss what do people believe? Why do people believe different things? Children need know the key places of worship for different religions such as Christianity, Judaism and Hinduism.</p>

## Curriculum: Key Skills, Knowledge and Enrichment

### Computing

**Our focus is:** Programming: 3D Lettering

**Skills / knowledge to be developed:** This half term we will be using [www.beetleblocks.com](http://www.beetleblocks.com) to design and code our own 3D lettering. We will be able to use abstractions to hide complexity in the design and code and recognise and make use of patterns throughout my design. I will then critically evaluate my work and suggest improvements.



**Applied through:** Computing lessons

### How can I help?

To remind your child of the importance of being safe online and checking your parental filters. Please also see our monthly online safety newsletter for updates.

The use of Social Media has an age restriction of 13.



### Homework

#### Ongoing Homework

- **Reading:** a minimum of 15 minutes reading every night (logged by the children and noted in their Planner). Children have a read theory login (in planners). Read theory helps pupils develop their reading comprehension. Children should be completing a couple of reading theory comprehensions a week at home.
- **KIRF Target:** See weekly homework tasks and list of KIRFS in Maths section.
- **Maths:** Please encourage your child to read the weekly KIRF task. Please use Times Tables Rockstars weekly to practise rapid recall skills.
- **Spellings:** Learn the list of spellings which are given to the children each half-term. The patterns change every week. The children should also be practicing their Year 5 and 6 statutory words, these can be found in their planners.

**Please encourage your children to discuss their homework at home in order that they develop the skills of explanation and reasoning.**

### Any Other Information / Dates for the Diary

We encourage you to follow our school X account (formerly twitter @GS\_Federation.

We regularly post updates and photographs of what your children are learning in class alongside other important school information, reminders and updates.



#### Key dates:

Monday 8<sup>th</sup> April – Training day  
 Tuesday 9<sup>th</sup> April - Back to School  
 Tuesday 16<sup>th</sup>/Wednesday 17<sup>th</sup> – Parent consultations  
 Thursday 18<sup>th</sup> April – Den Building Workshop  
 Monday 22<sup>nd</sup> April – School Trip to Mother Shipton's Cave  
 Monday 6<sup>th</sup> May – Bank holiday  
 Wk. beginning Monday 13<sup>th</sup> May – SATS week (Year 6 only)  
 Wk. beginning Monday 20<sup>th</sup> May – Bikeability  
 Friday 26<sup>th</sup> May – Break up for May half term

Thank you, as always, for your continuous help and support. If you have any queries, please do not hesitate to contact us or make an appointment at the office to arrange a meeting after school.

Mr Sneddon