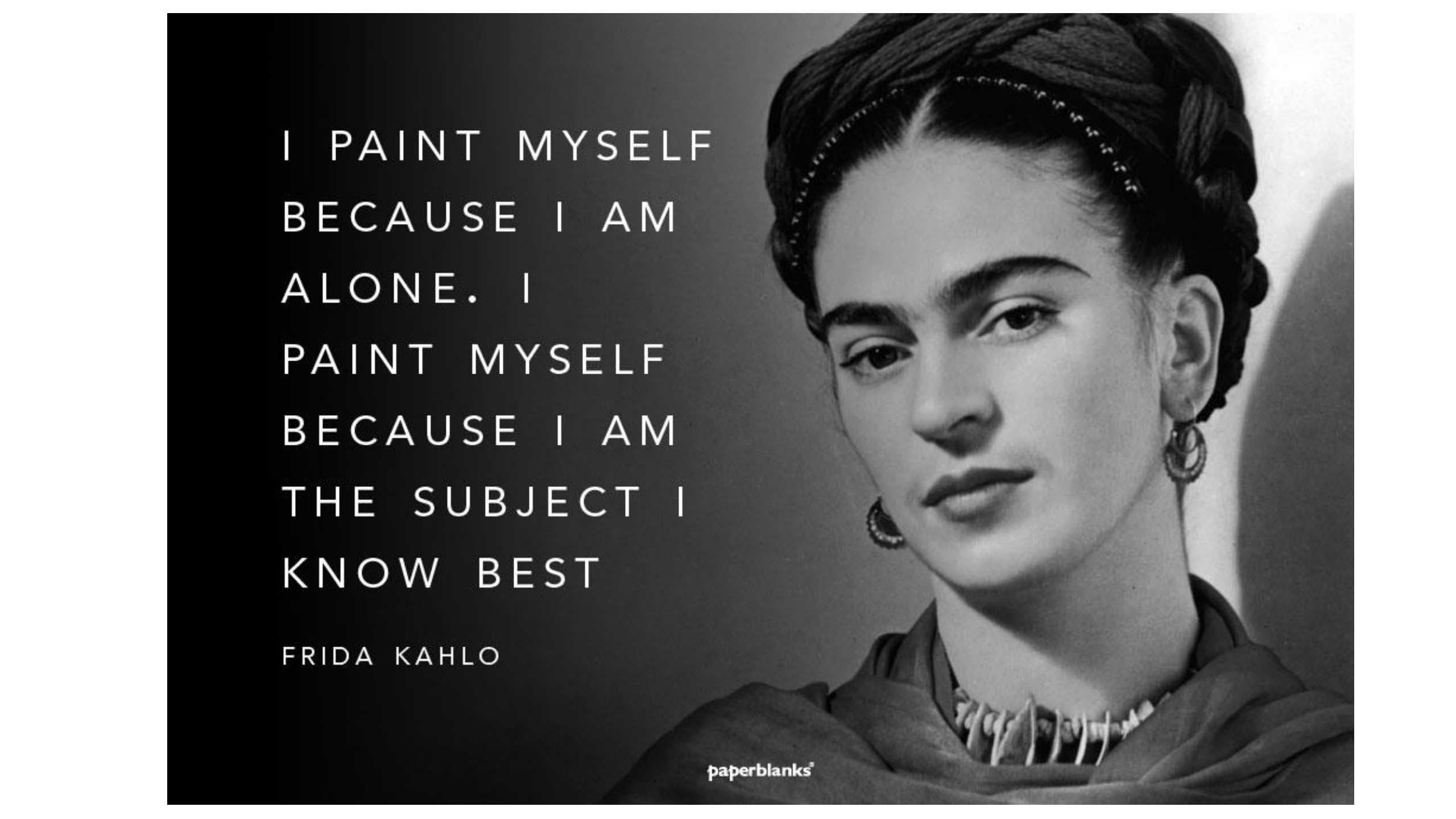




Frida Kahlo

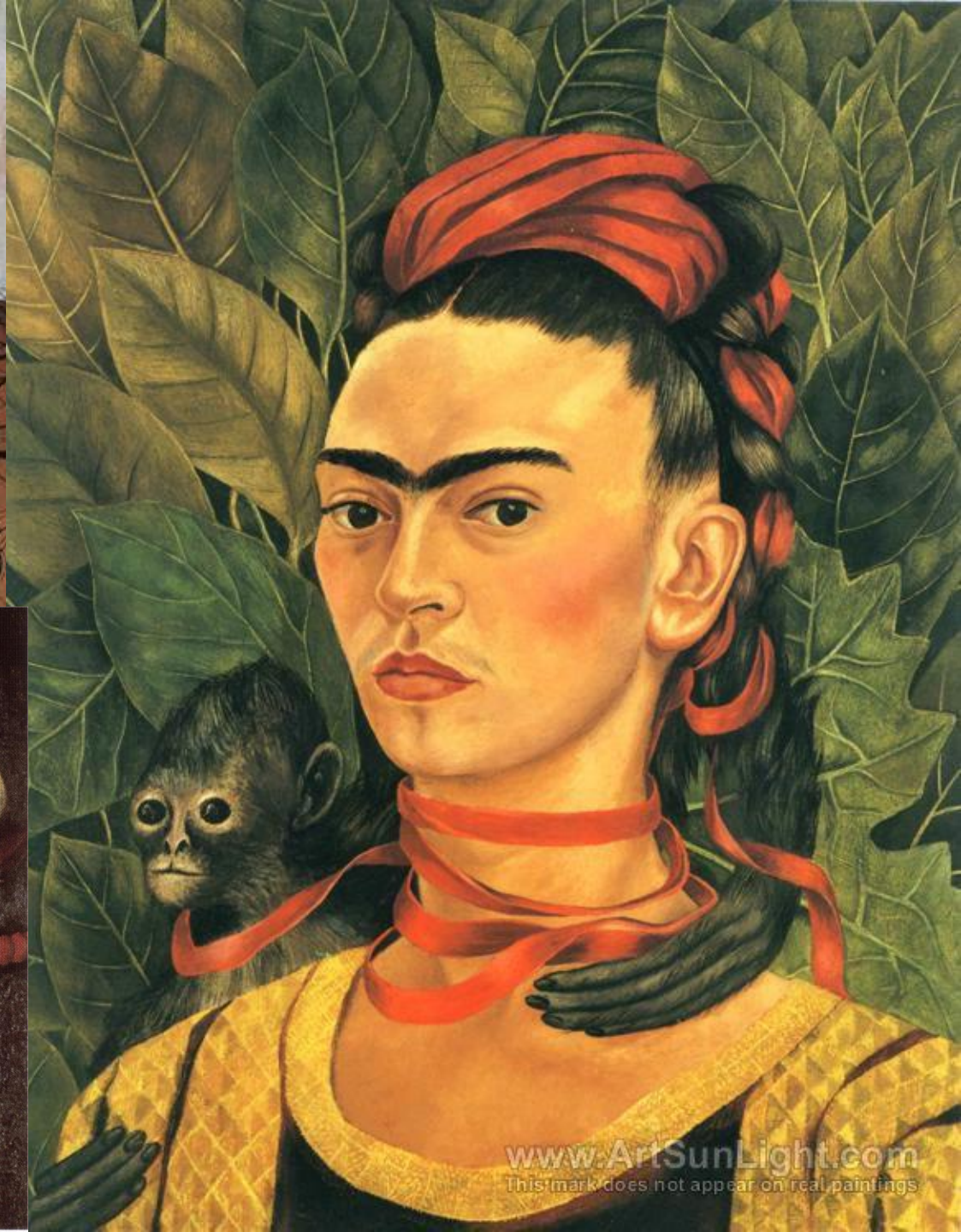
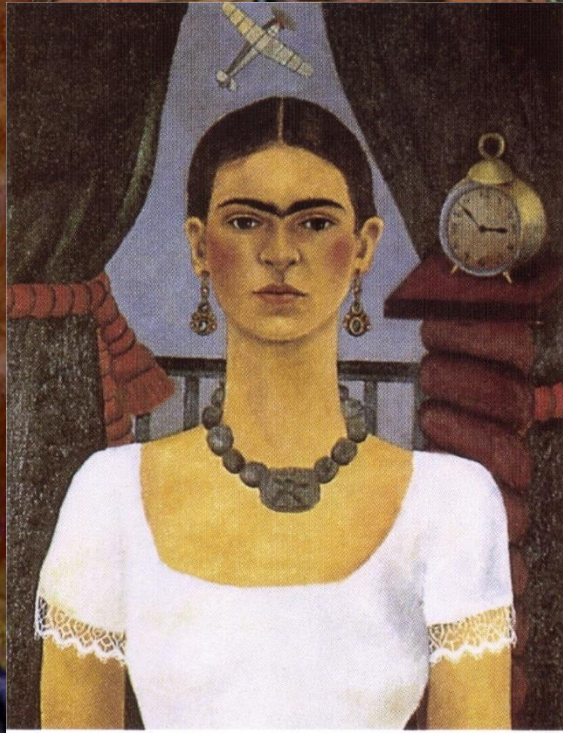
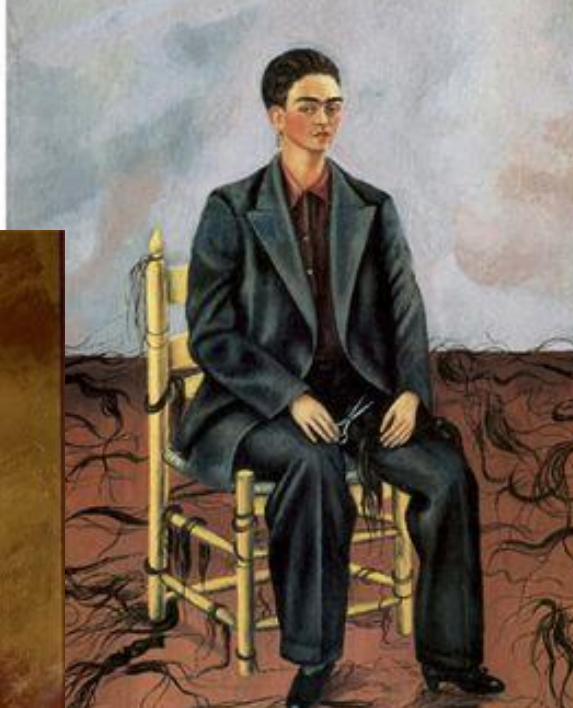
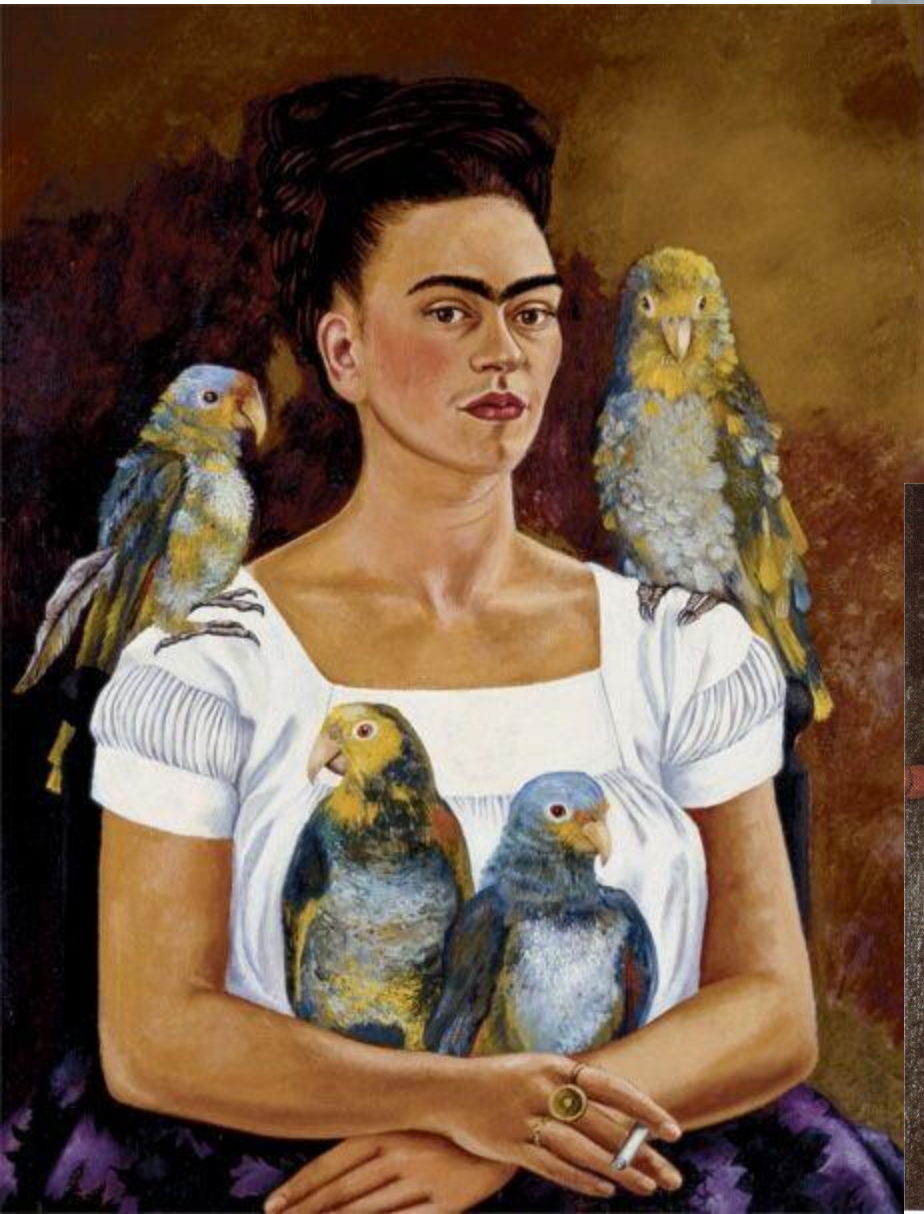
1907-1954

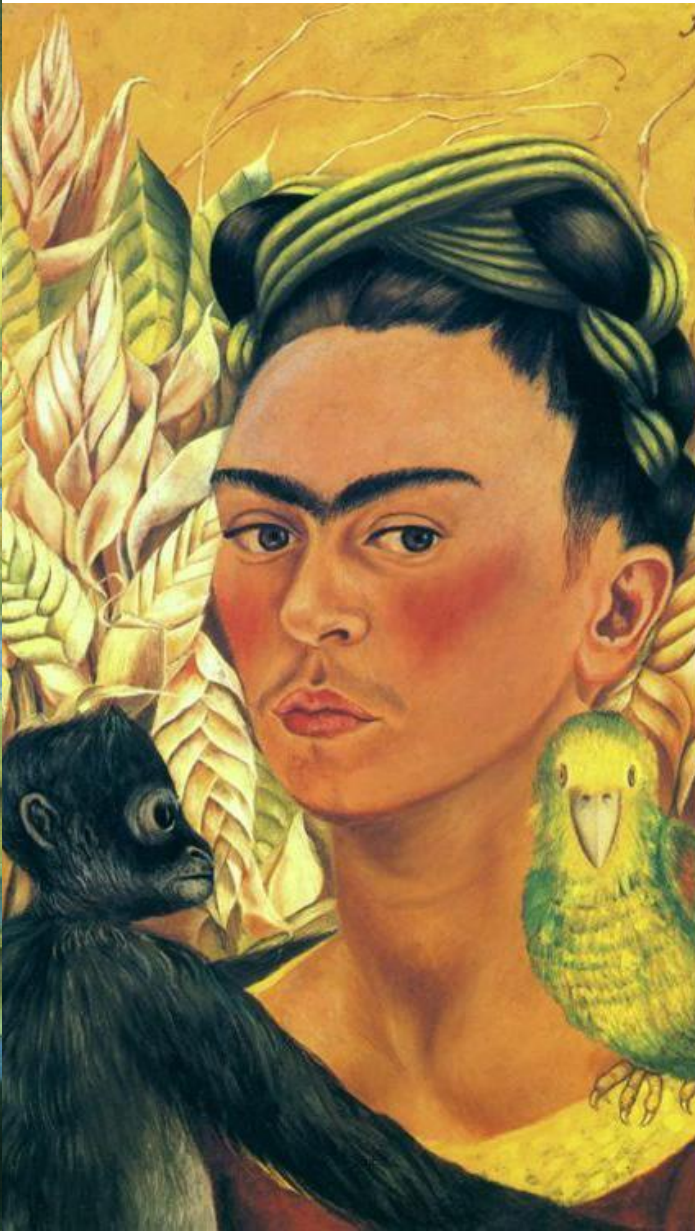
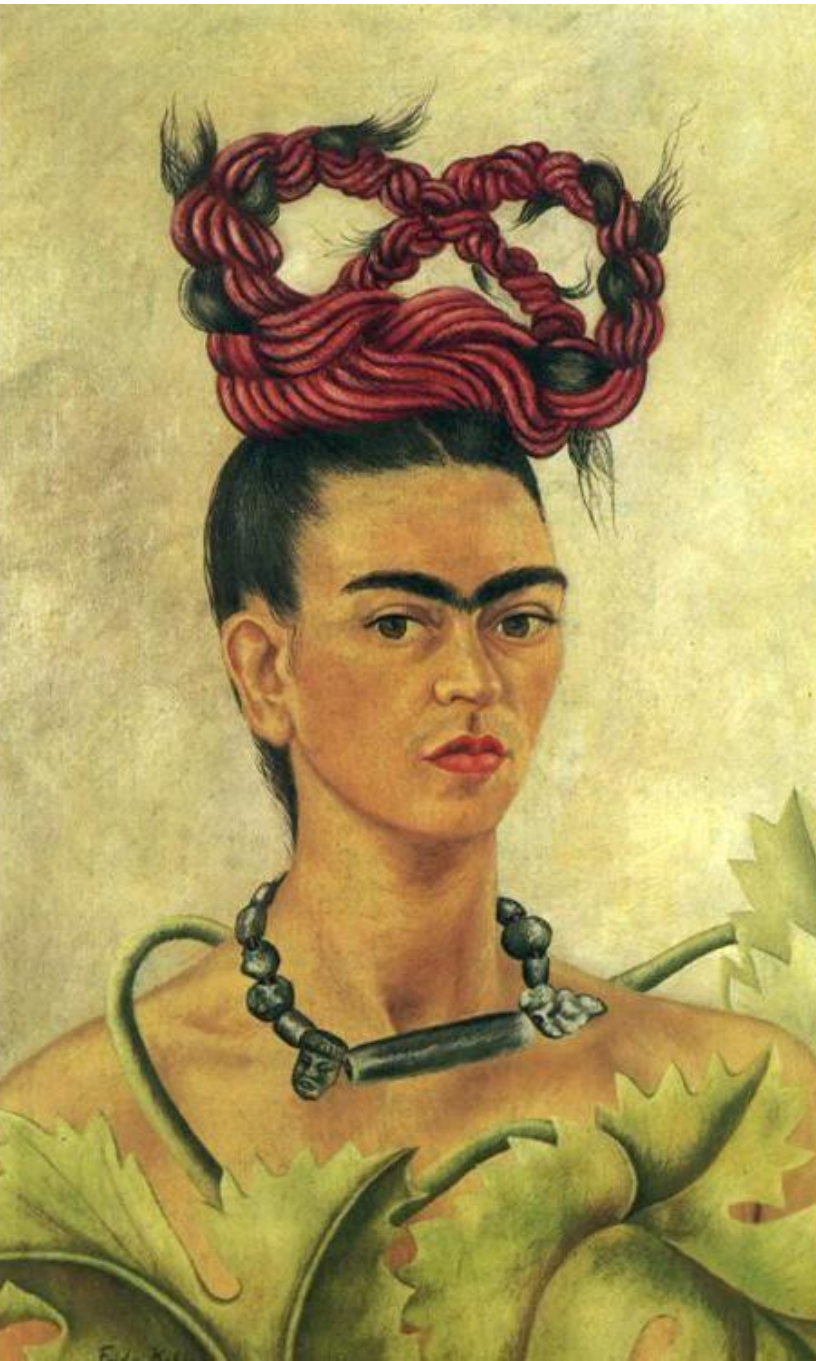
A black and white portrait of Frida Kahlo, showing her from the chest up. She has her hair styled in a traditional braid with a headband and is wearing large hoop earrings and a necklace. The background is a plain, light color.

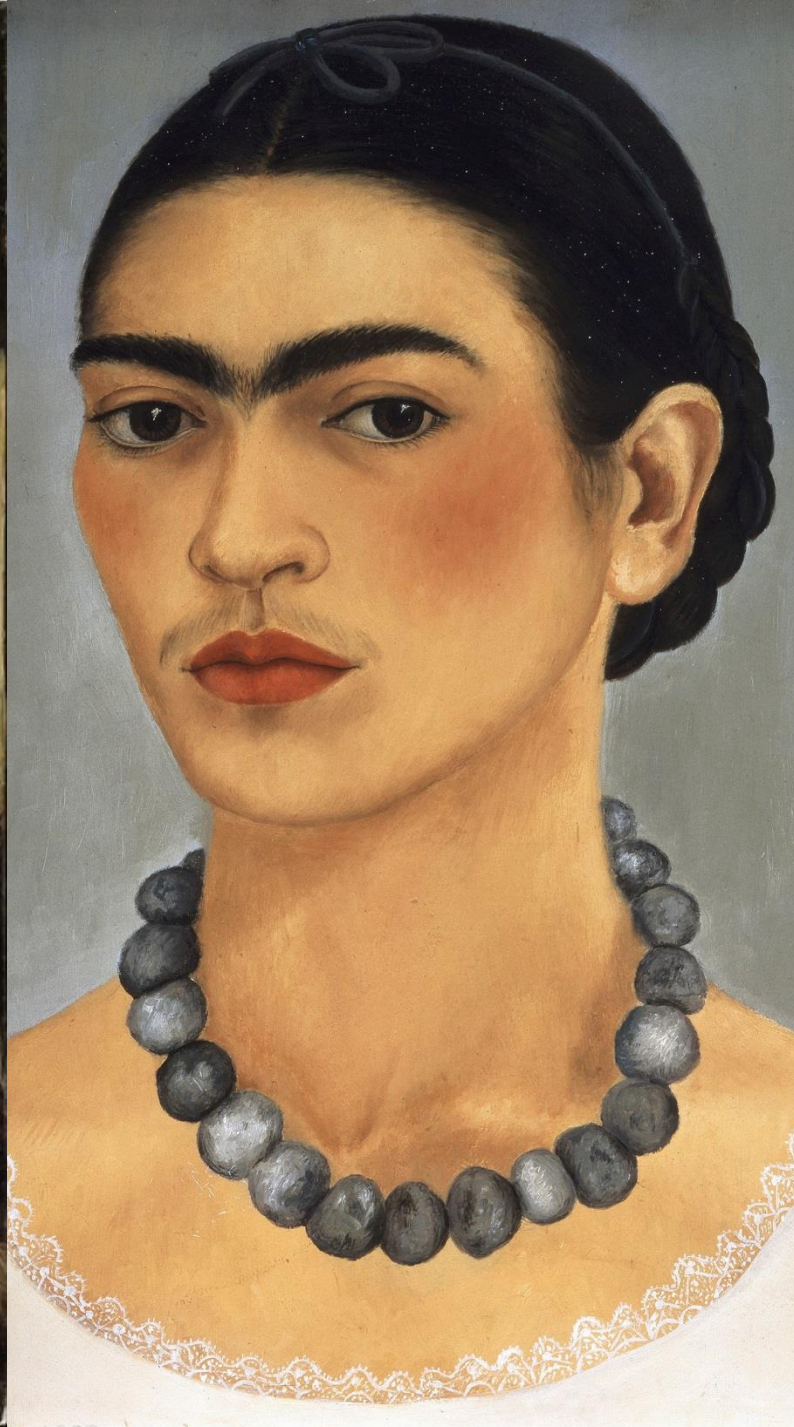
I PAINT MYSELF  
BECAUSE I AM  
ALONE. I  
PAINT MYSELF  
BECAUSE I AM  
THE SUBJECT I  
KNOW BEST

FRIDA KAHLO

# Self-portraits

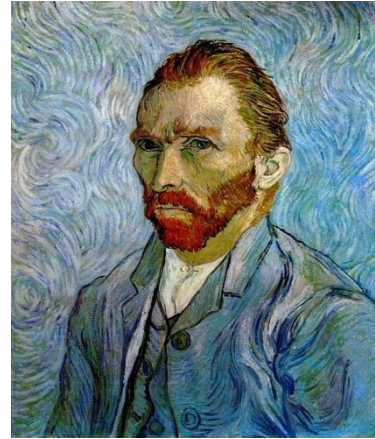




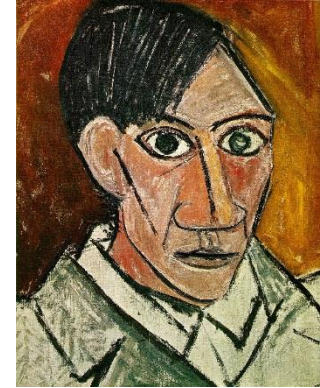




How do Kahlo's self-portraits differ to those you've seen by other artists?



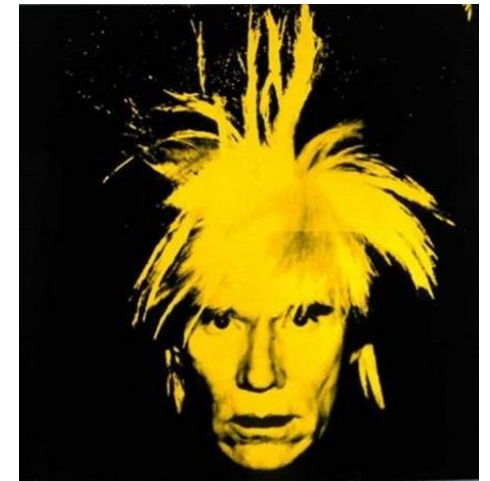
Van Gogh



Picasso

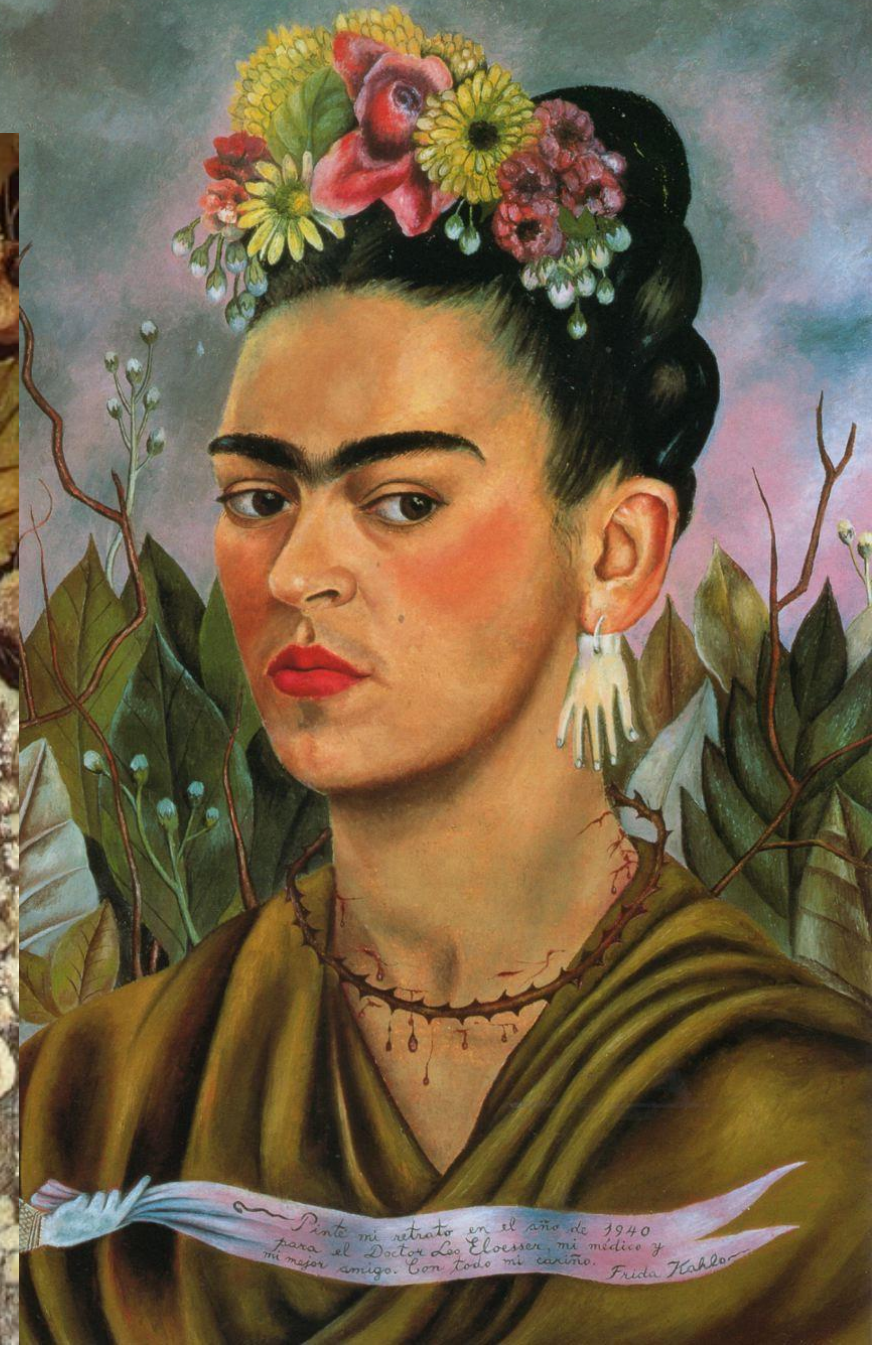
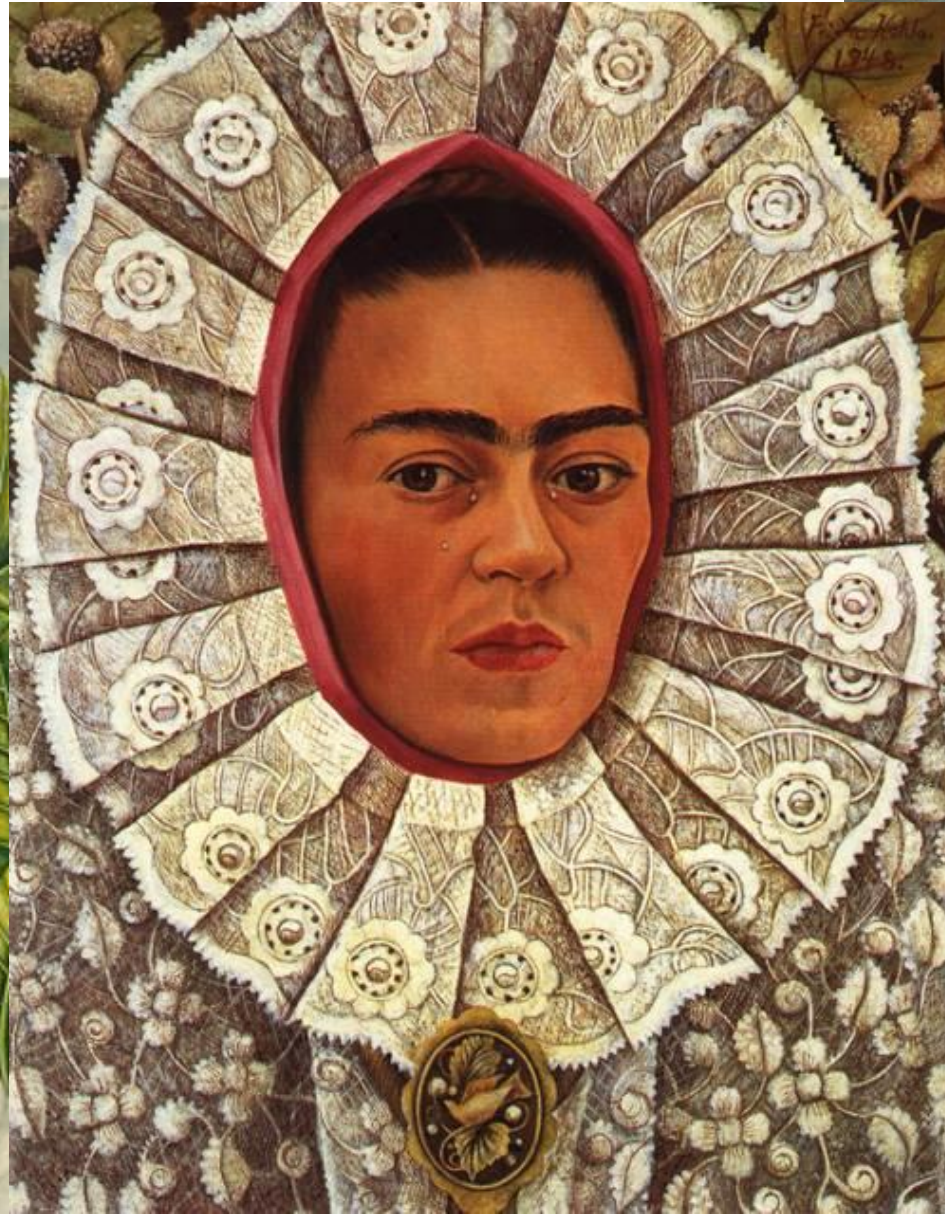


Lowry



Warhol

Kahlo's self-portraits were often in the Surrealist style.  
What might she have been communicating?



What are your thoughts about this painting, called 'Roots'?





The Surrealism is more obvious in this painting called 'The Wounded Deer'.

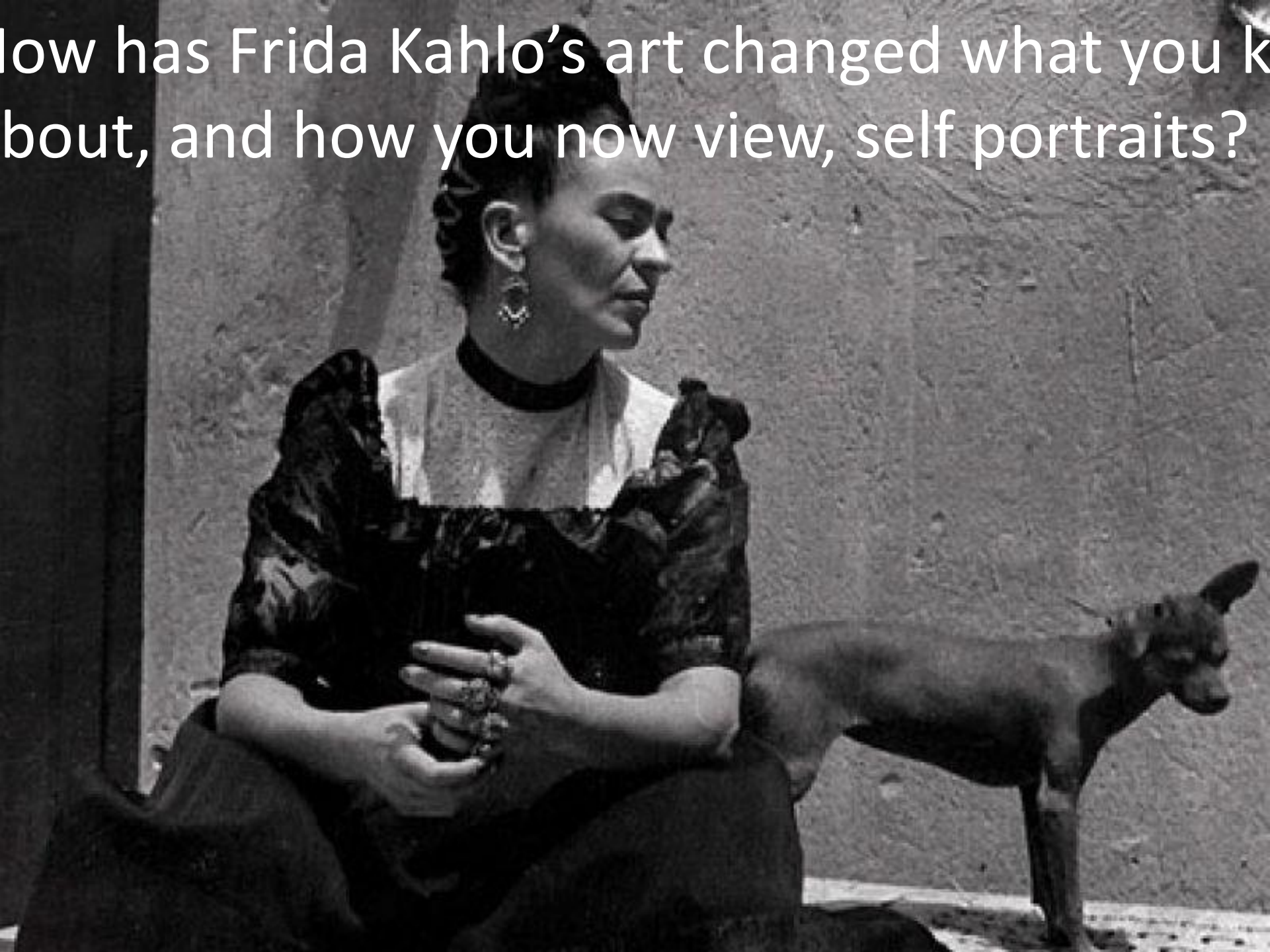
Why do you think she painted herself in this way?

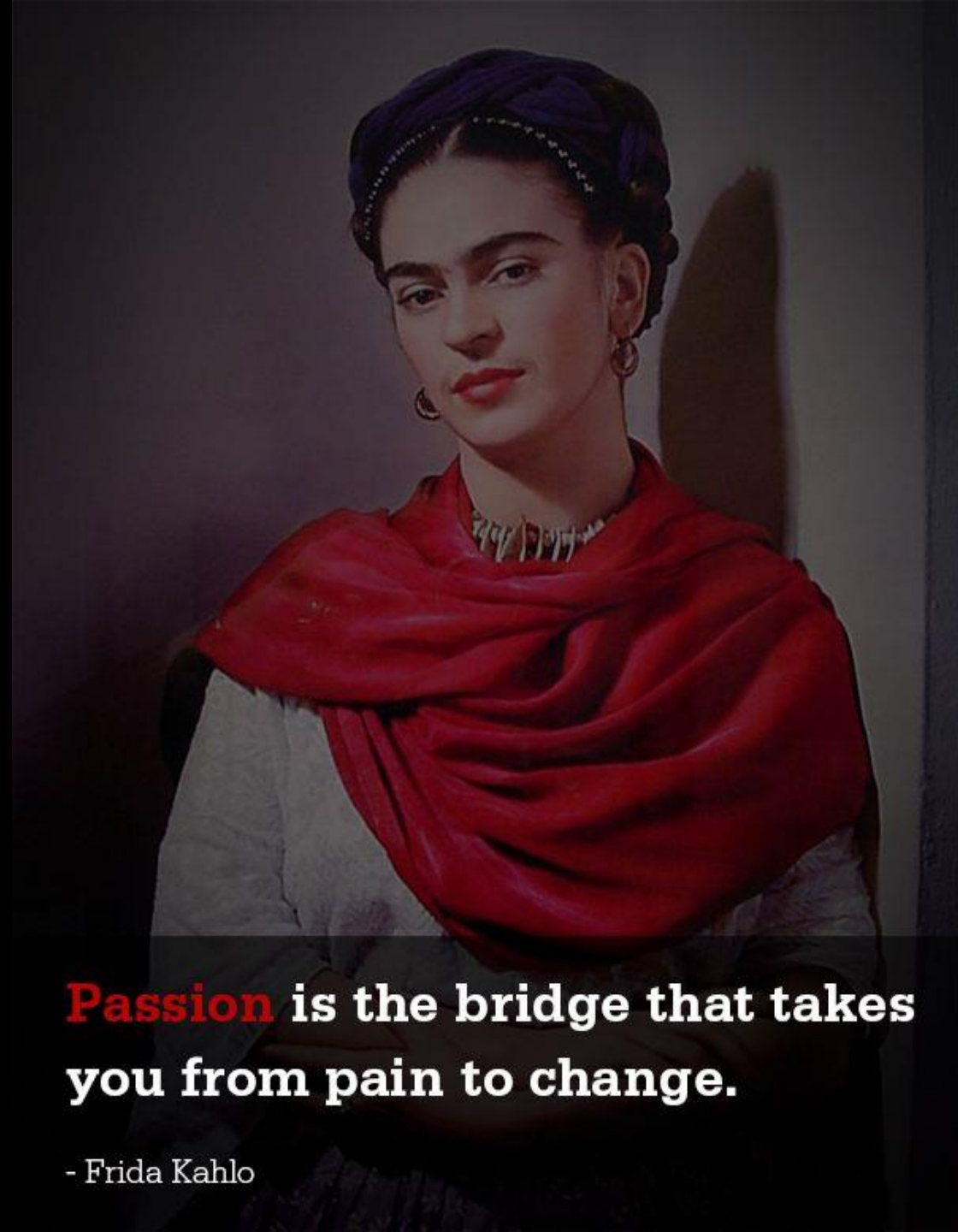
Discuss.

What thoughts and emotions does it evoke in you?



How has Frida Kahlo's art changed what you knew about, and how you now view, self portraits?





**Passion** is the bridge that takes  
you from pain to change.

- Frida Kahlo

I used to think I was the strangest person in the world but then I thought there are so many people in the world, there must be someone just like me who feels bizarre and flawed in the same ways I do. I would imagine her, and imagine that she must be out there thinking of me too. Well, I hope that if you are out there and read this and know that, yes, it's true I'm here, and I'm just as strange as you.

-Frida Kahlo

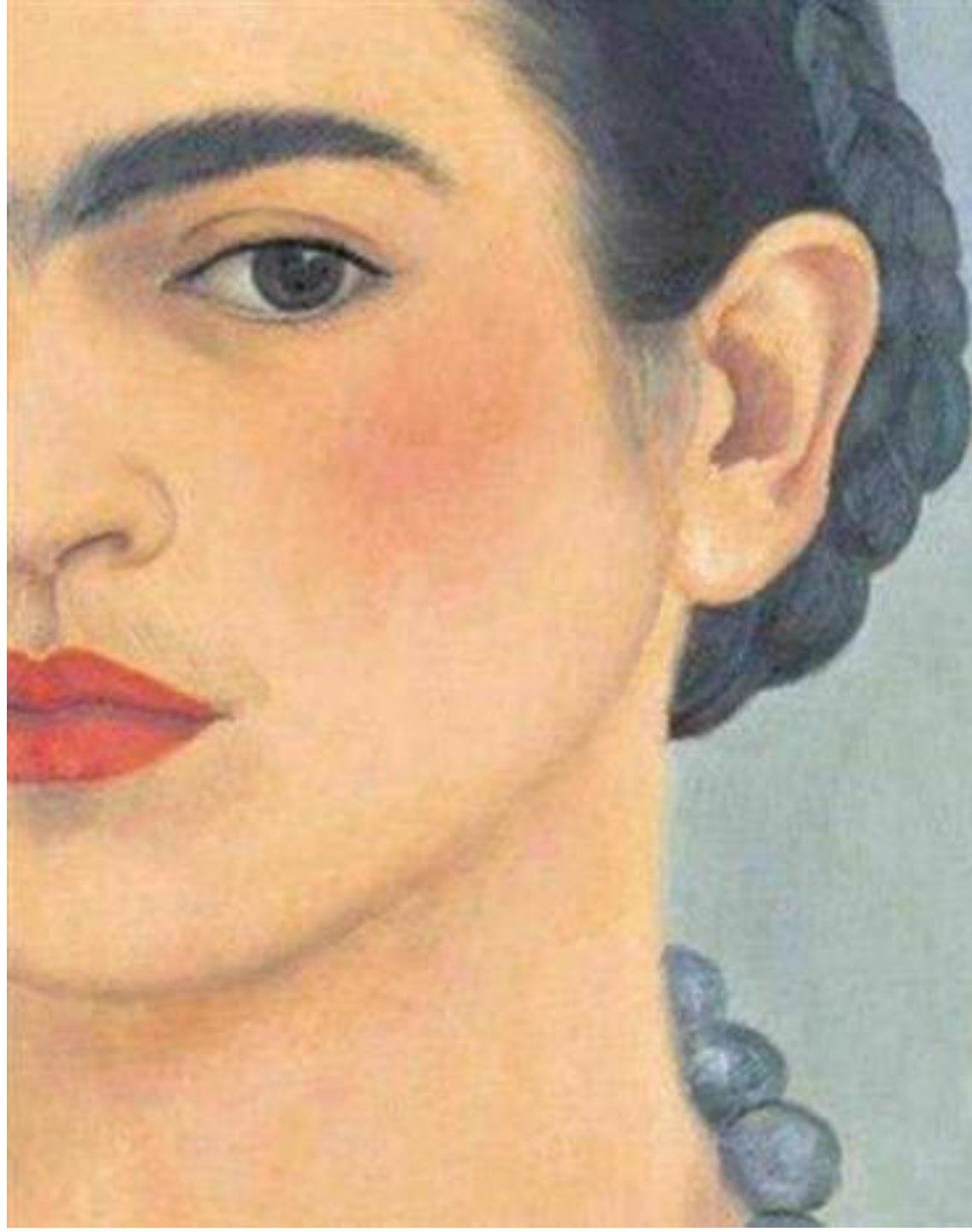


Los esposos Guillermo Kahlo y Matilde C. de Kahlo dan las gracias  
a la Virgen de los Dolores por haber salvado  
a su Niña Frida del accidente ocurrido en 1925  
en la Esquina de Cuahutemoc y Calzada de Tlalpa

In 1925 when Frida was aged 18, she was the victim of a bus crash, suffering many injuries: three breaks to her spinal column, a broken collarbone and two broken ribs, eleven fractures in her right leg and a crushed and dislocated right foot. Kahlo's pelvis broke in three places and a steel handrail deeply pierced her abdomen. She never fully recovered from her injuries, and sometimes wore a brace or used a wheelchair.



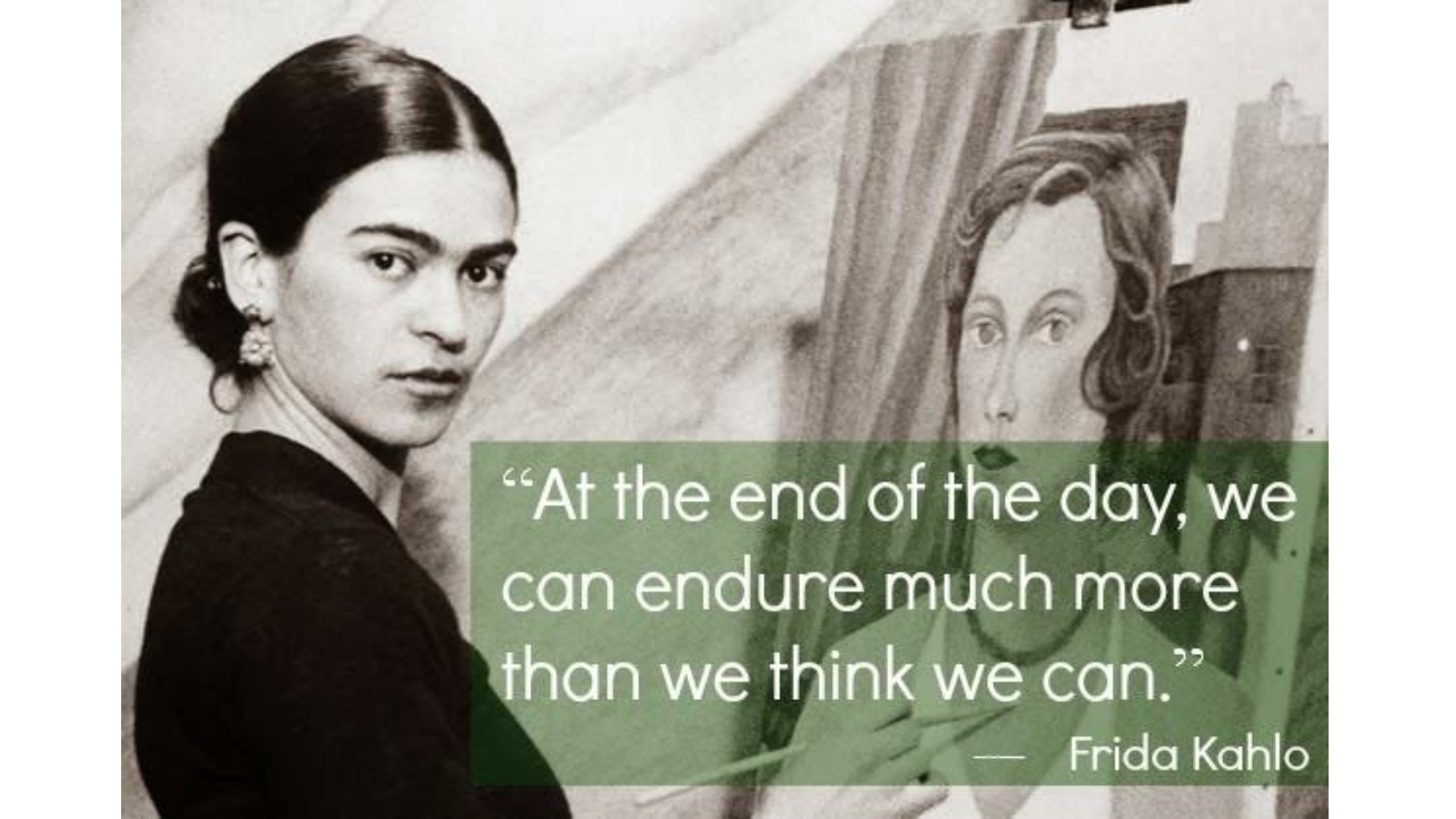




*"Don't build a wall around  
your own suffering  
or it may devour you  
from the inside."*

*Frida Kahlo*





“At the end of the day, we  
can endure much more  
than we think we can.”

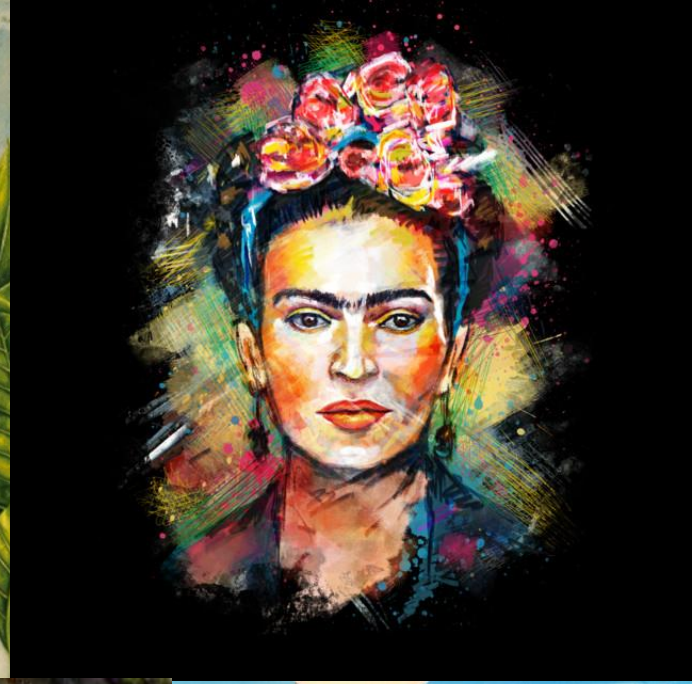
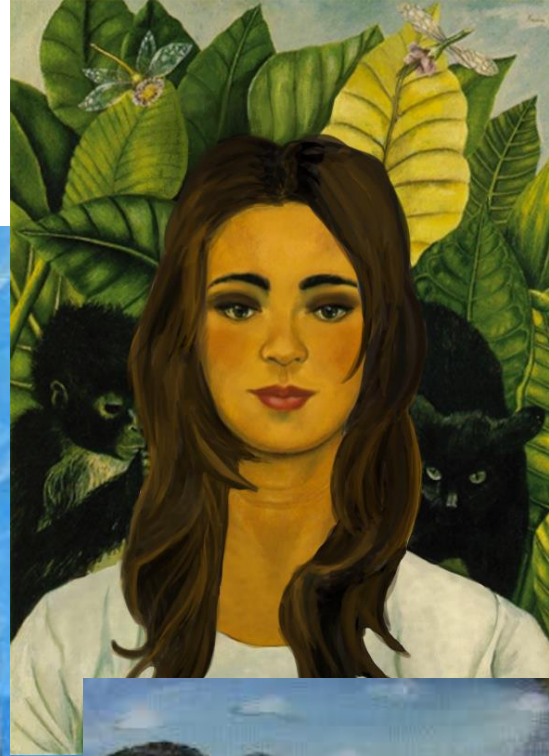
— Frida Kahlo



‘Feet, what do I need you for  
when I have wings to fly’  
– Frida Kahlo



Other artists' work:  
inspired by  
Frida Kahlo...



## Reflection time:

If you were to create your own self-portrait, what would you include, in order to tell the audience about you, your likes, personality etc.?

Could you create two self-portraits: positive and negative?

Or create portraits based on positive/negative traits/ life events and emotions of a character you know from a book or film?

*How might Harry Potter paint himself, in the style of Frida Kahlo?*

*How might Maleficent paint herself?*